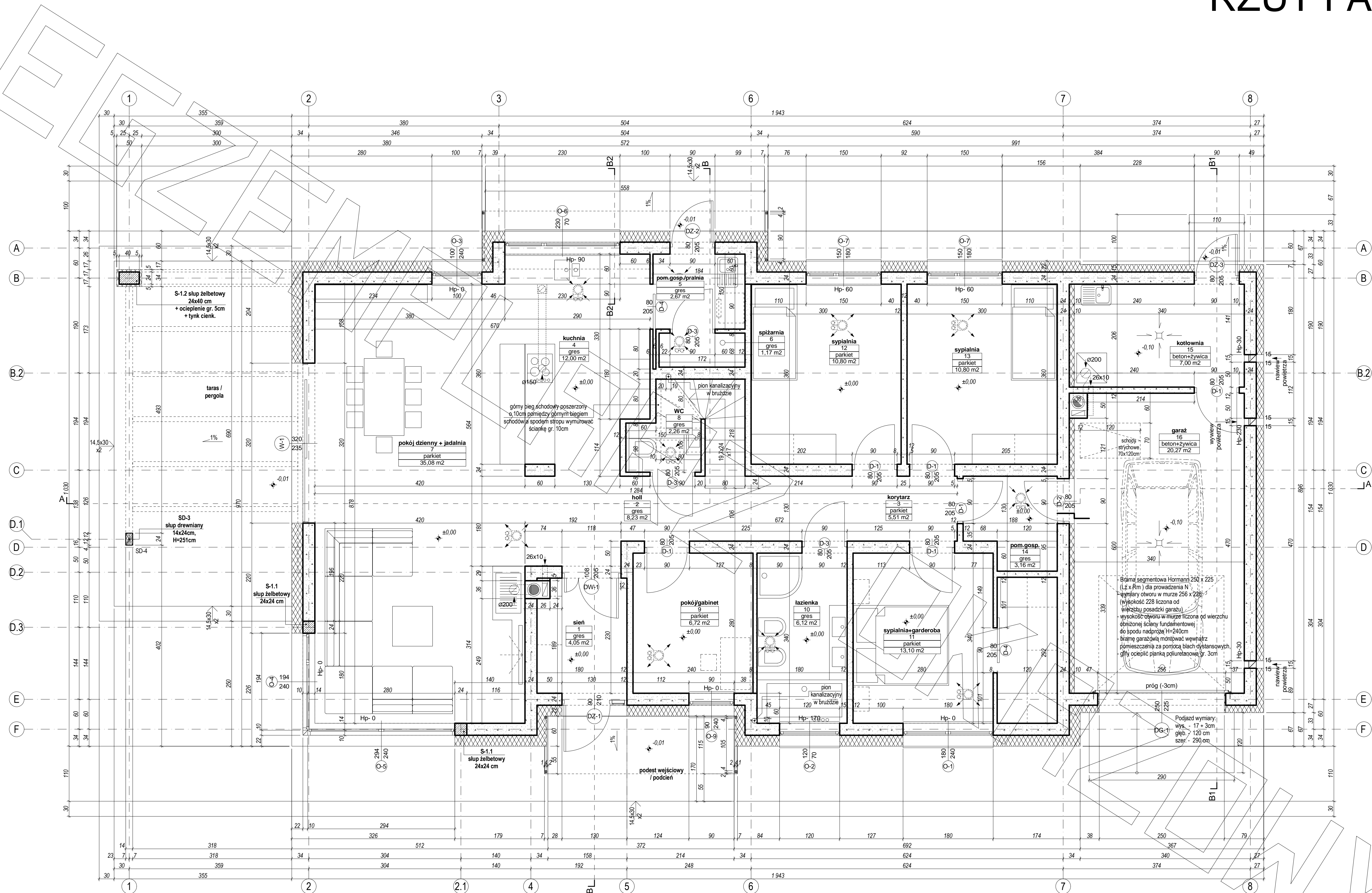
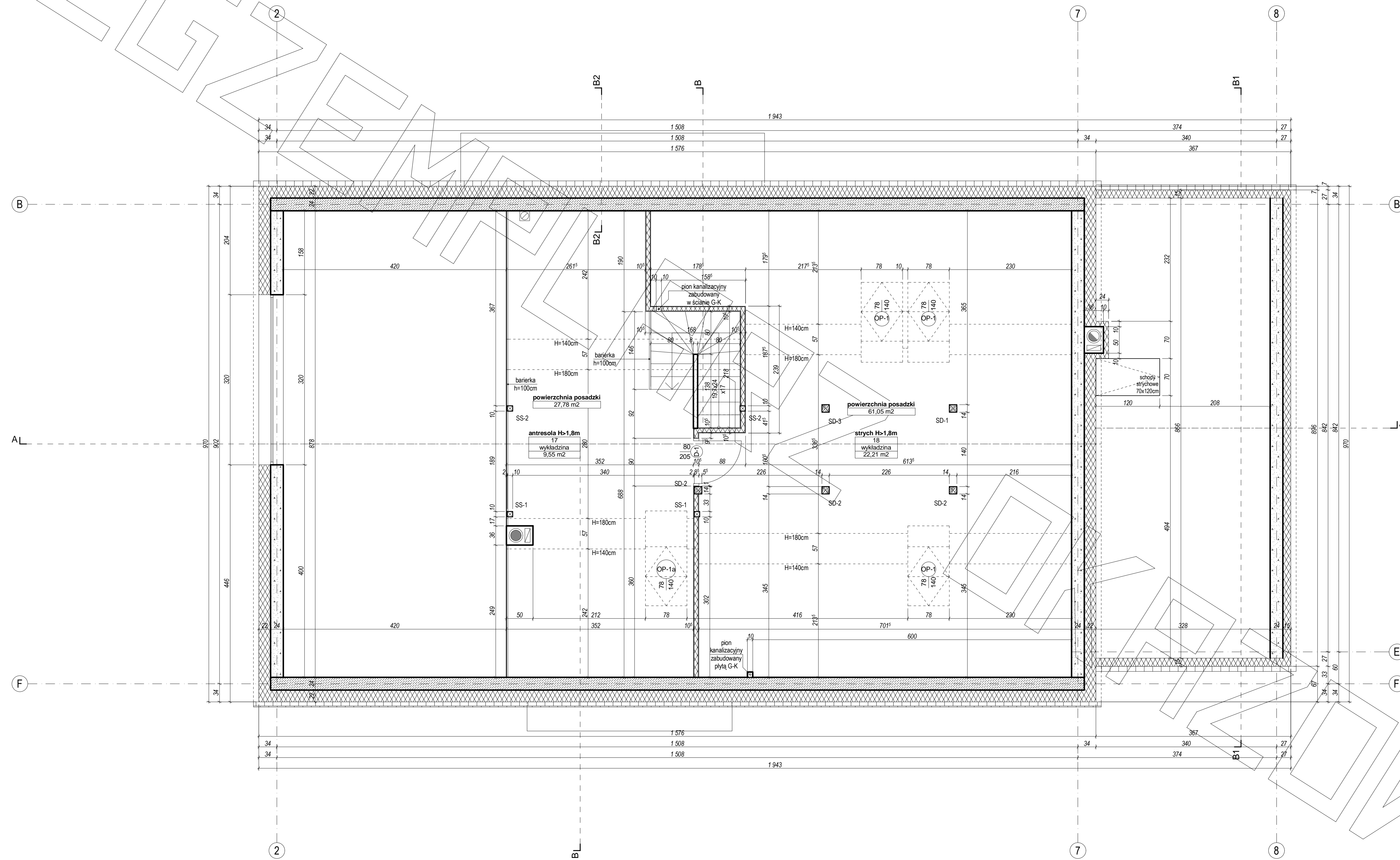


# RZUT PARTERU





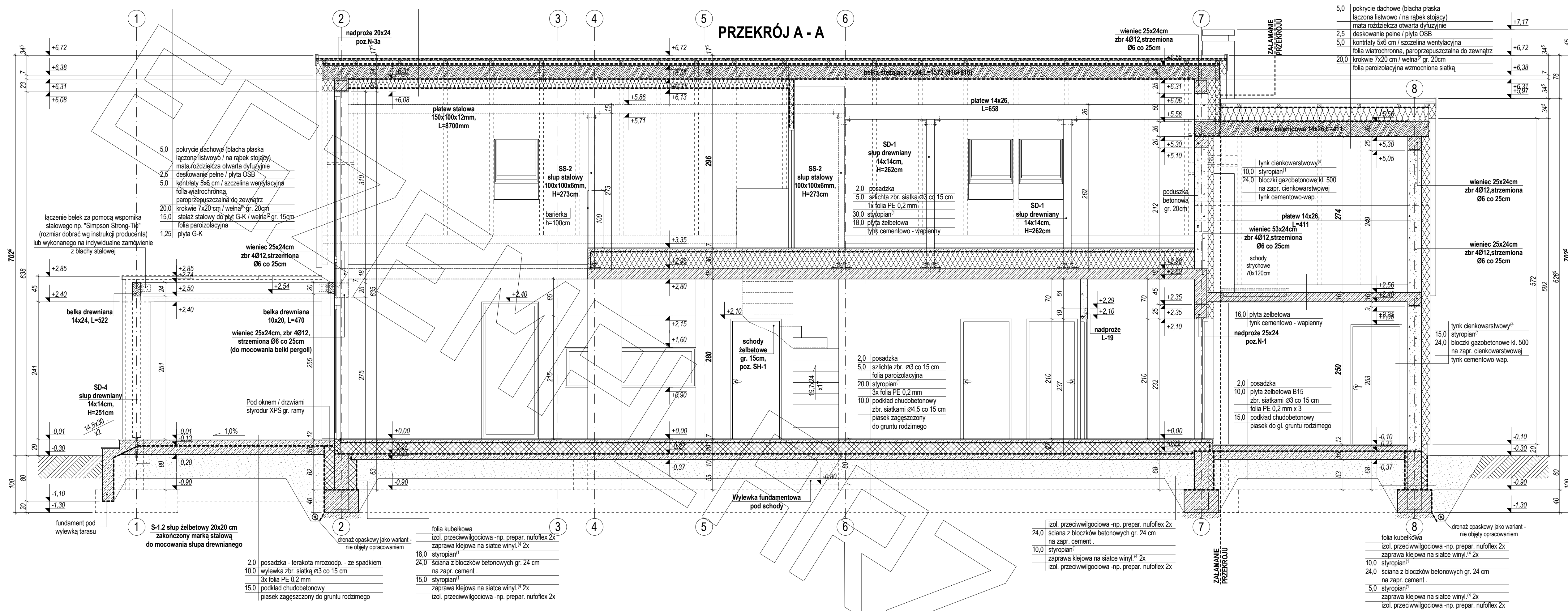
# RZUT PODDASZA



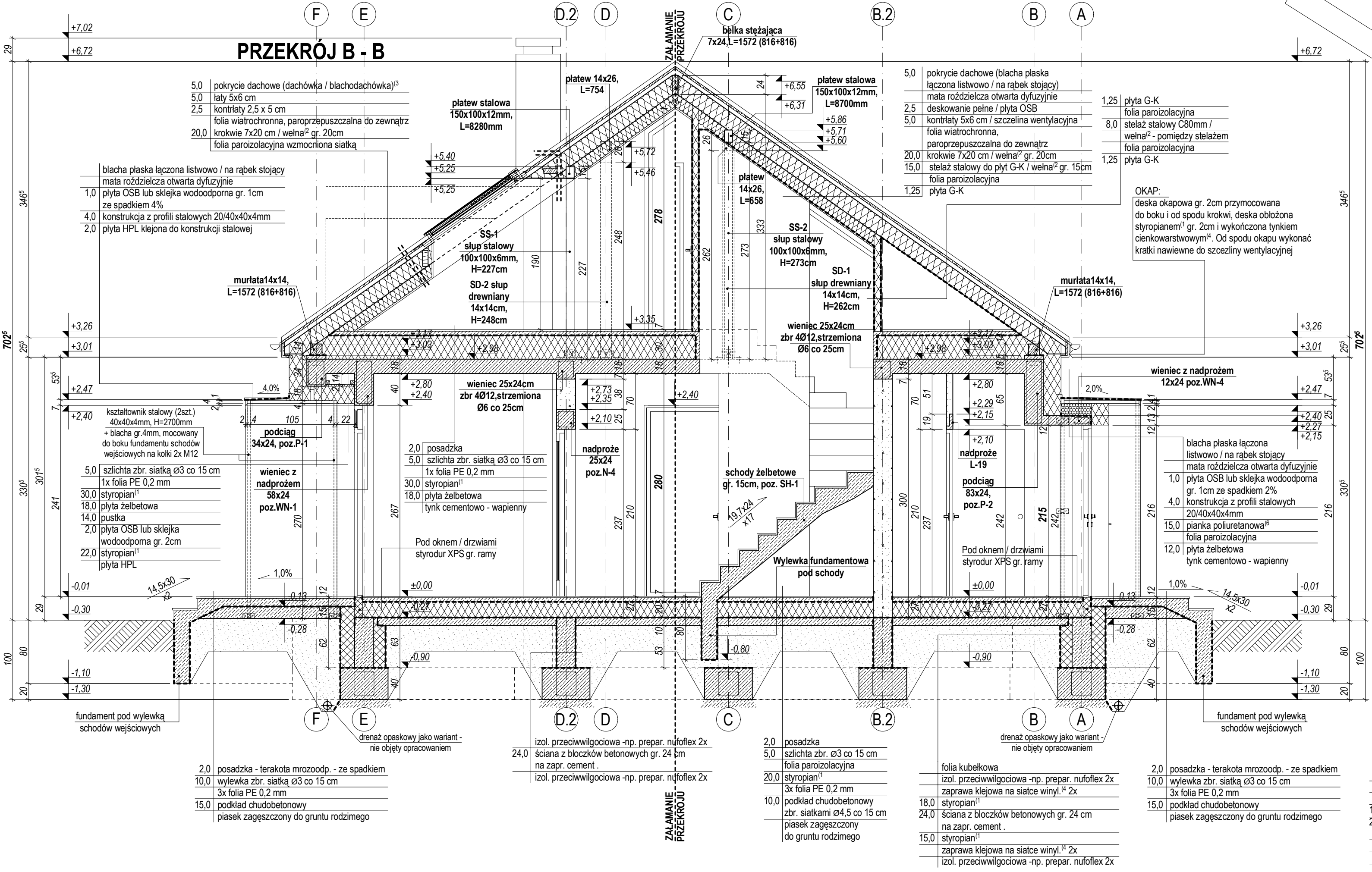


# PRZEKRÓJ

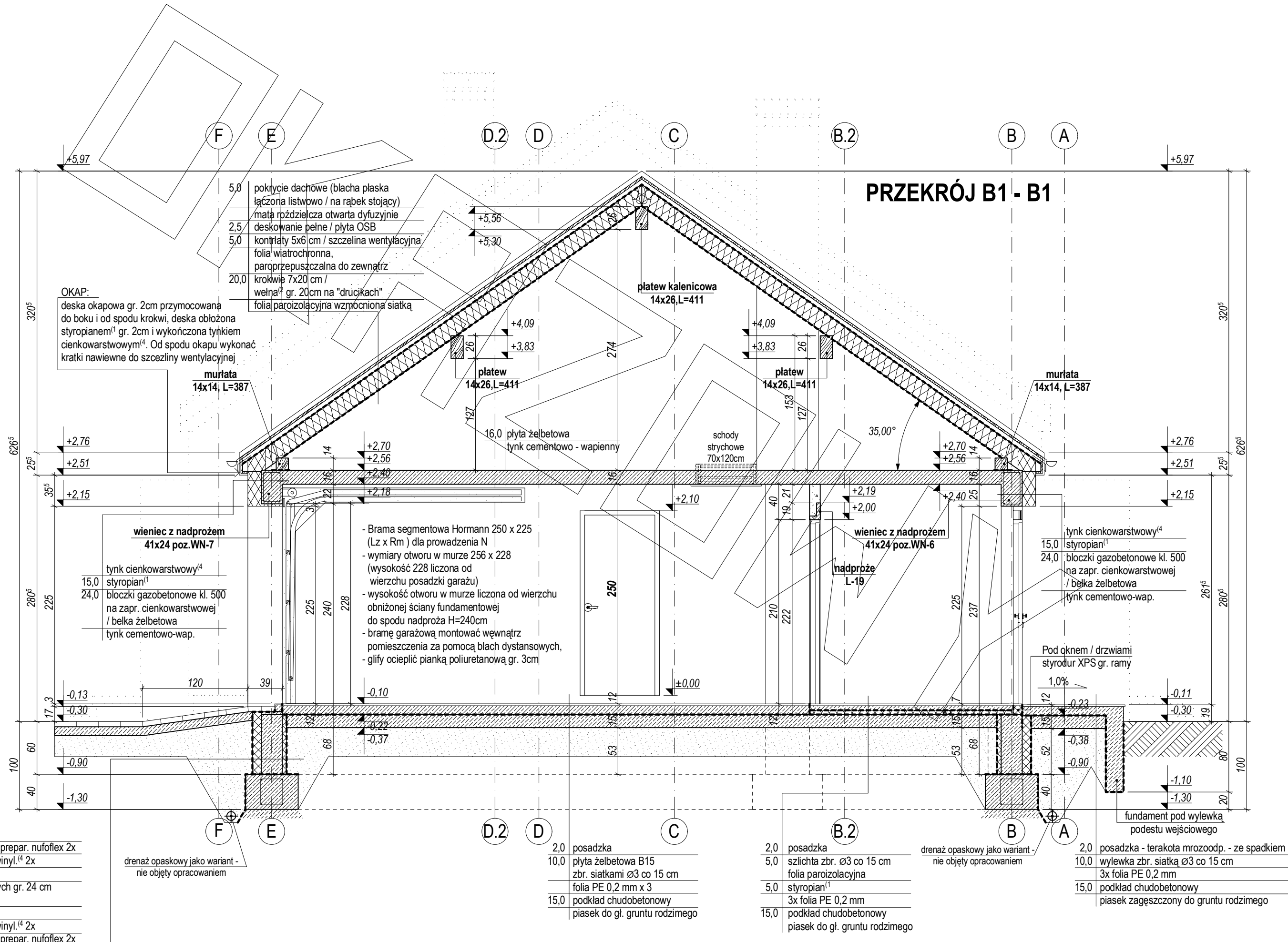
## PRZEKRÓJ A - A



## PRZEKRÓJ B - B

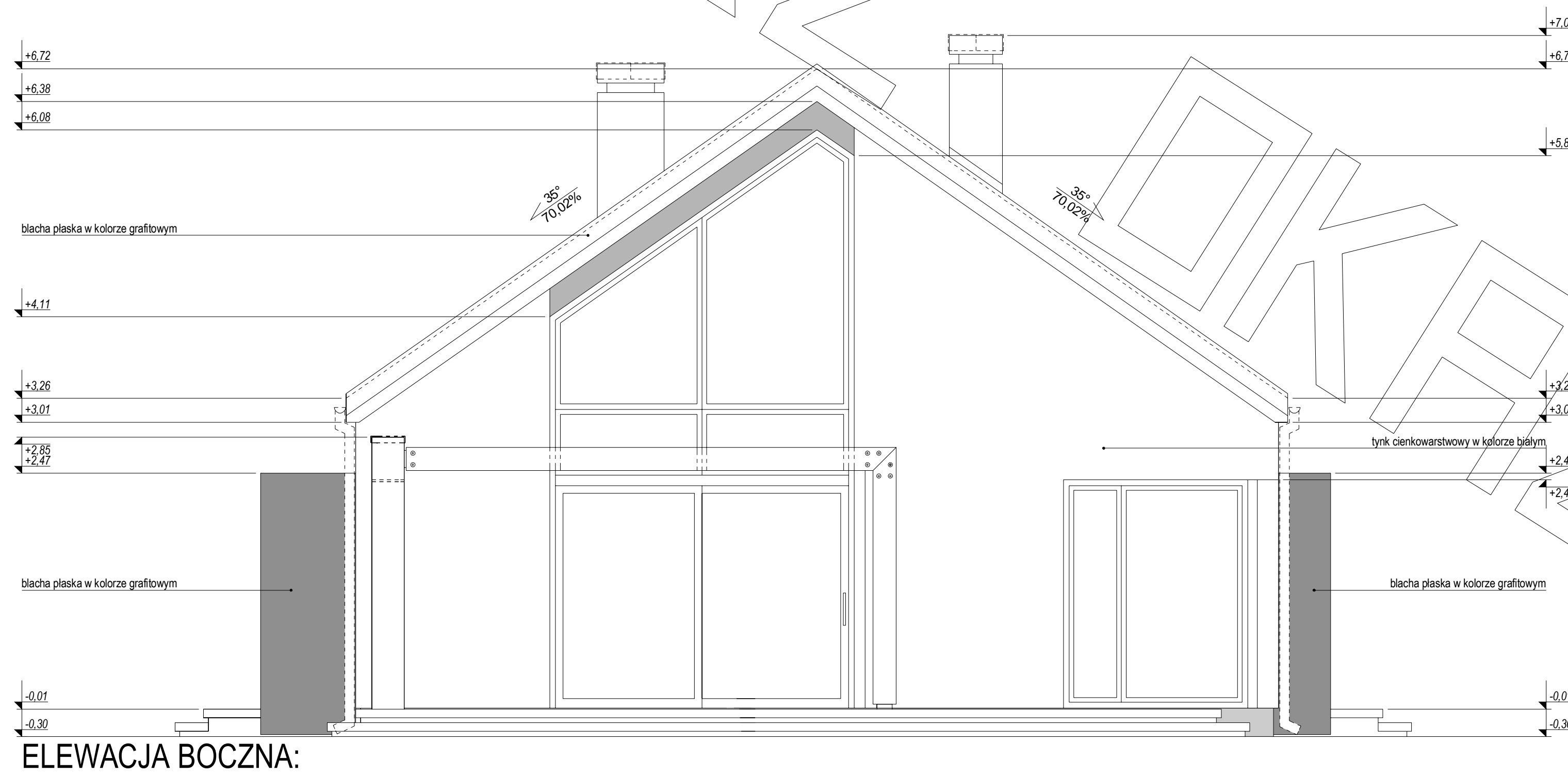
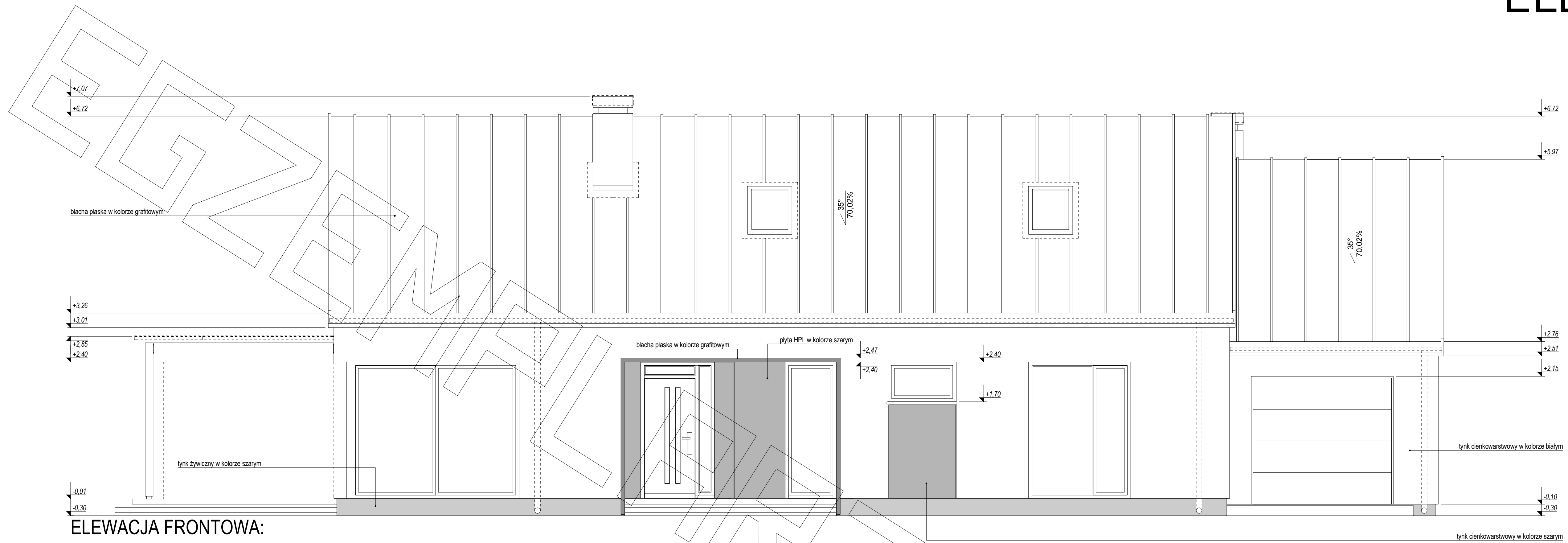


## PRZEKRÓJ B1 - B1

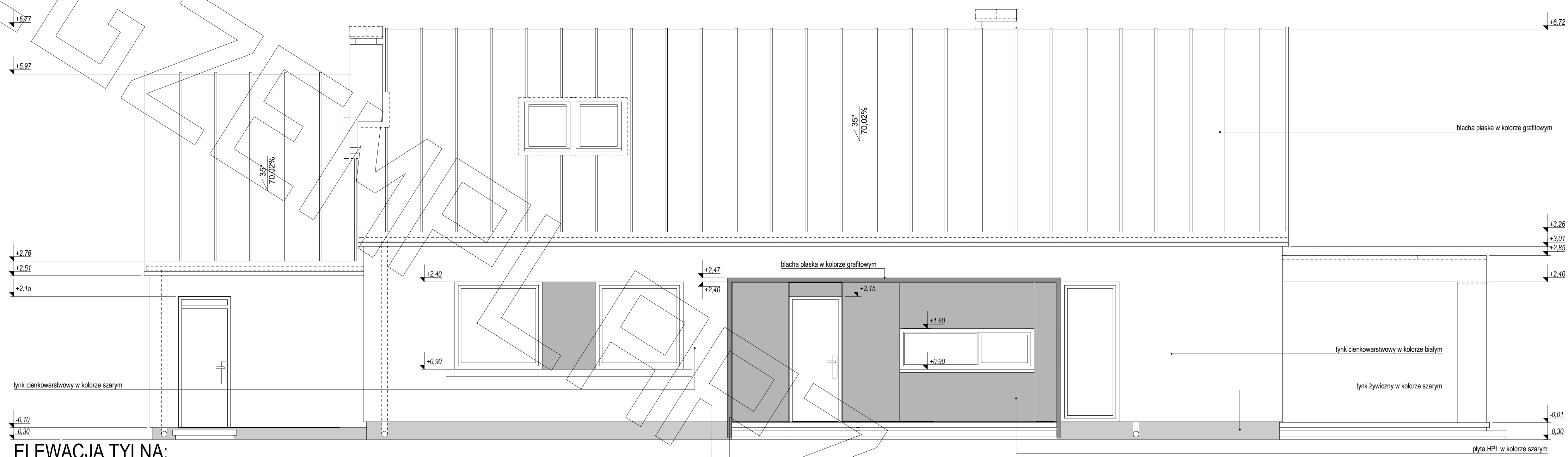




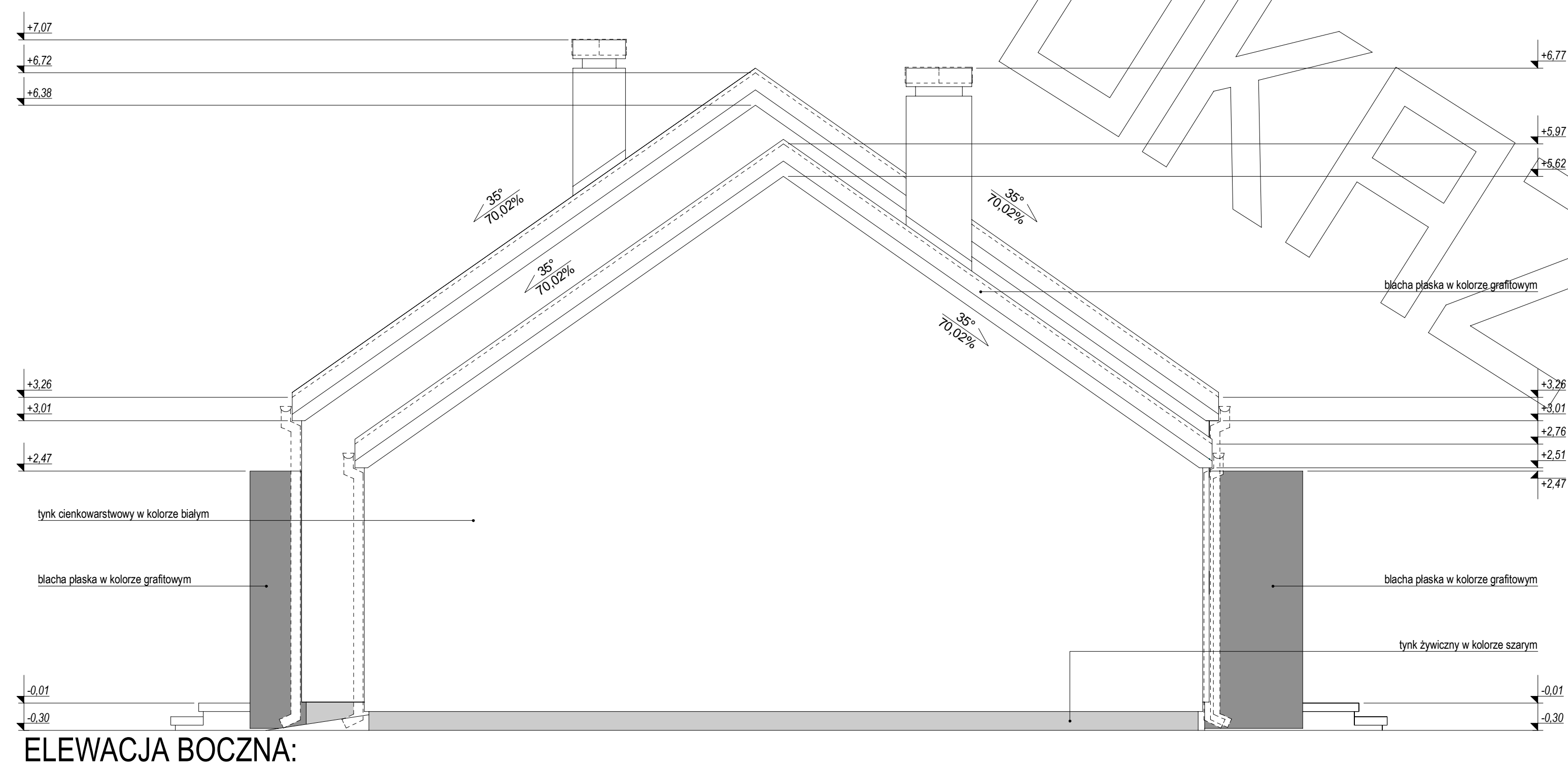
# ELEWACJE



# ELEWACJE



ELEWACJA TYLNA:



ELEWACJA BOCZNA: