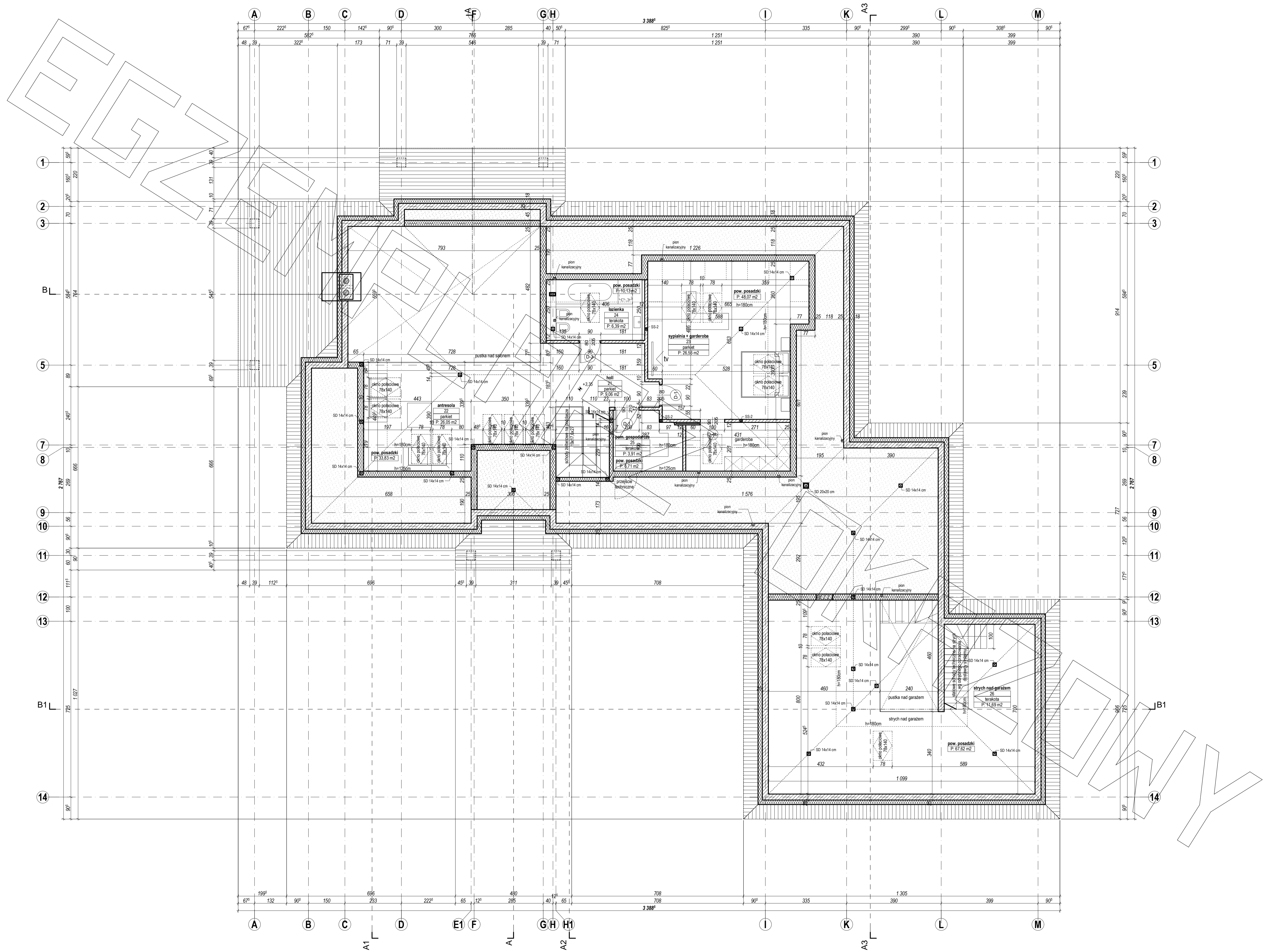
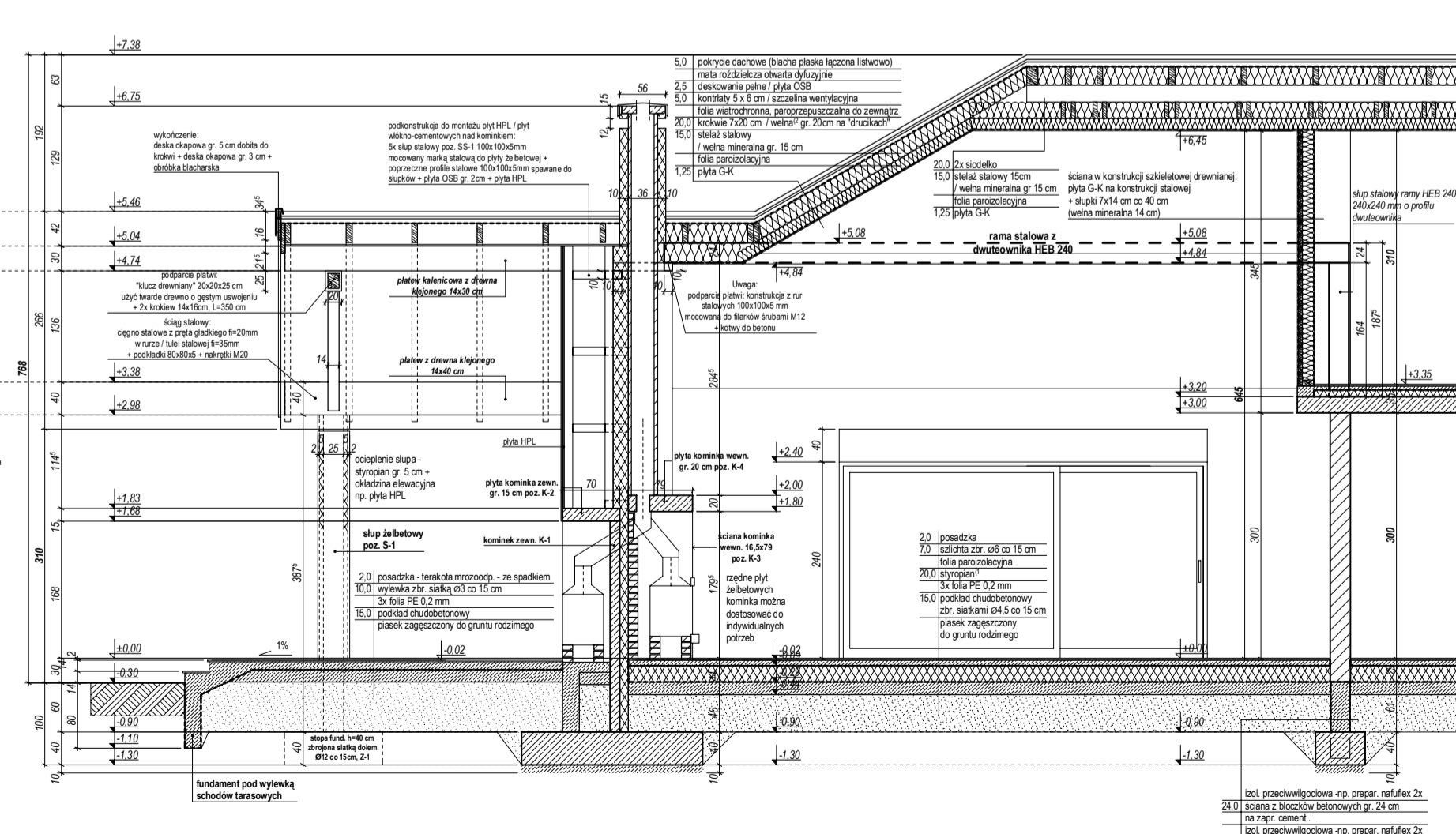
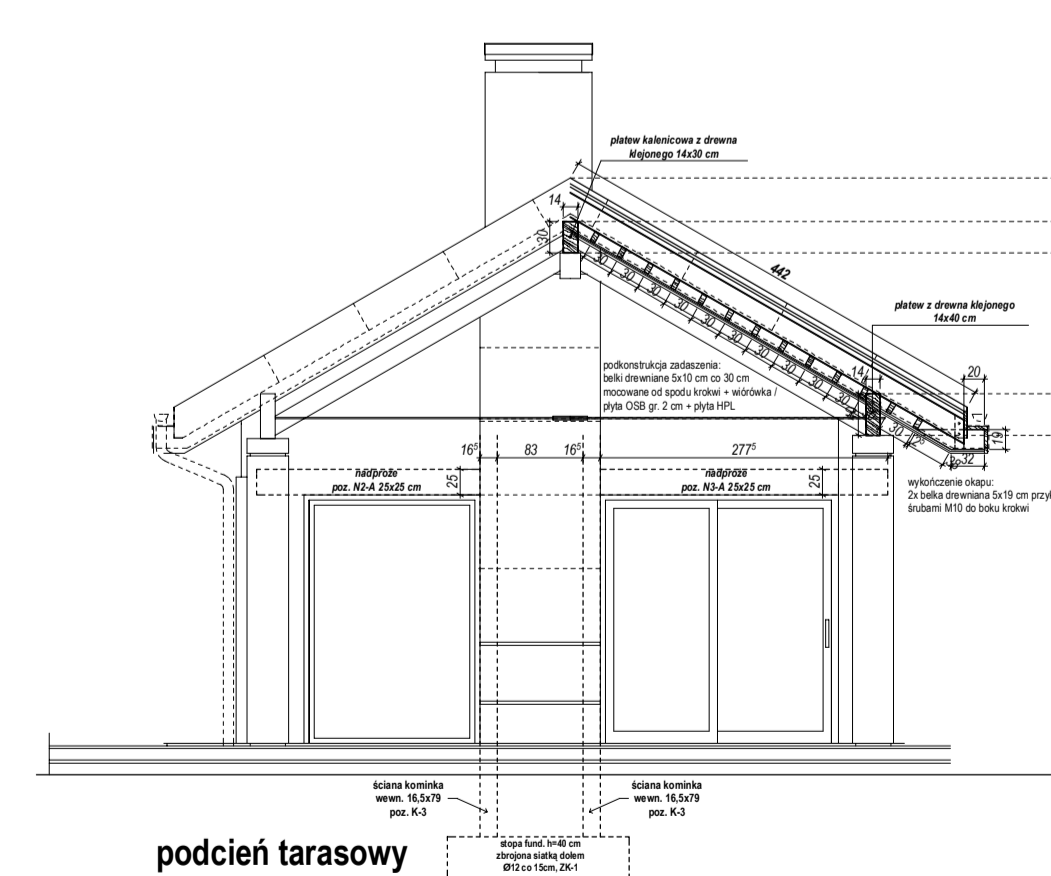
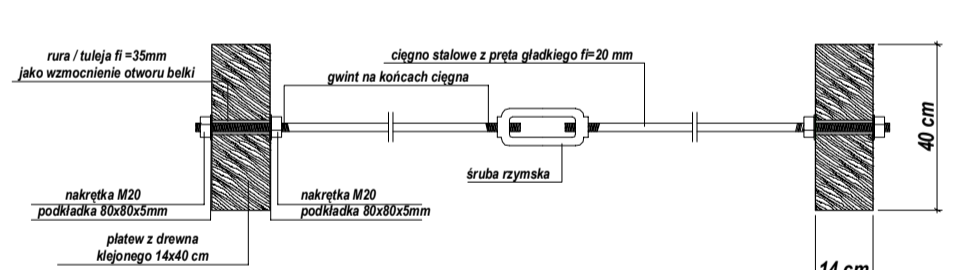
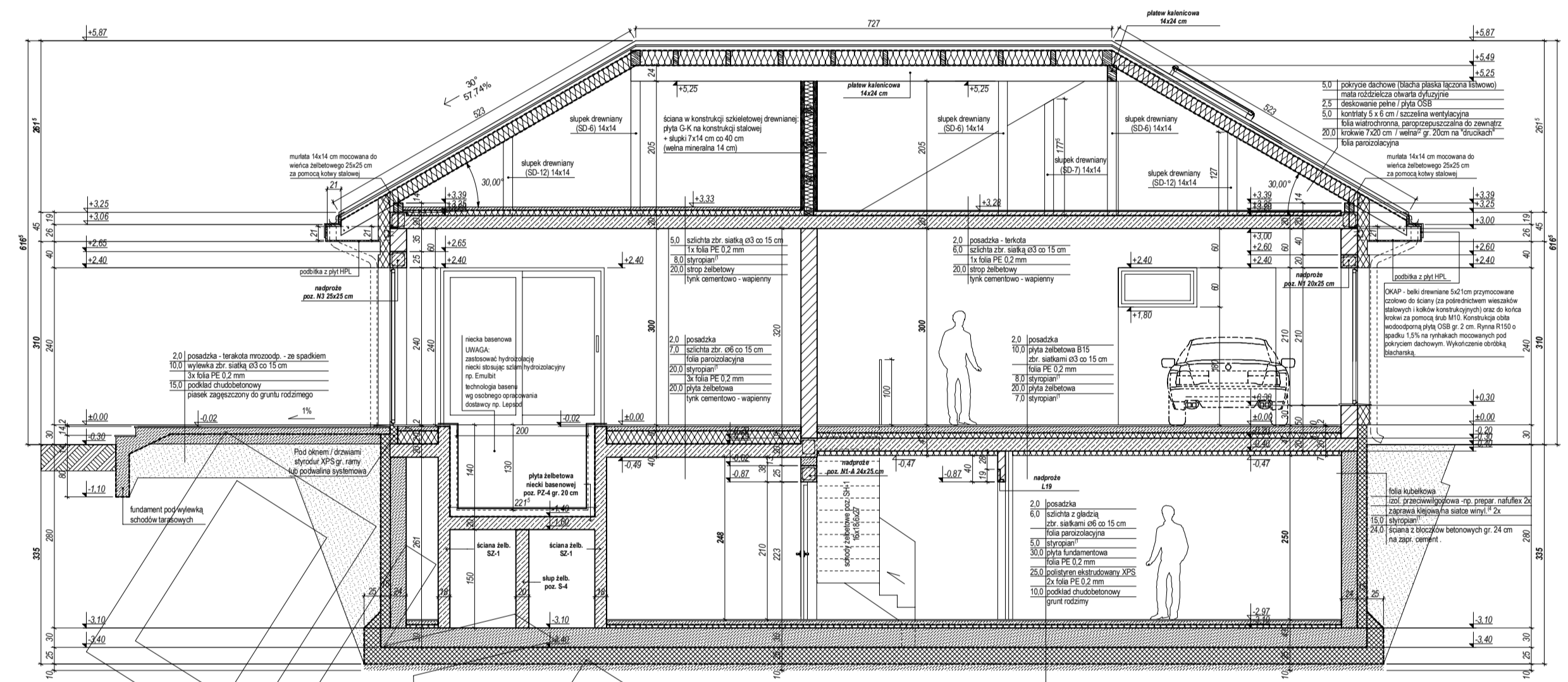
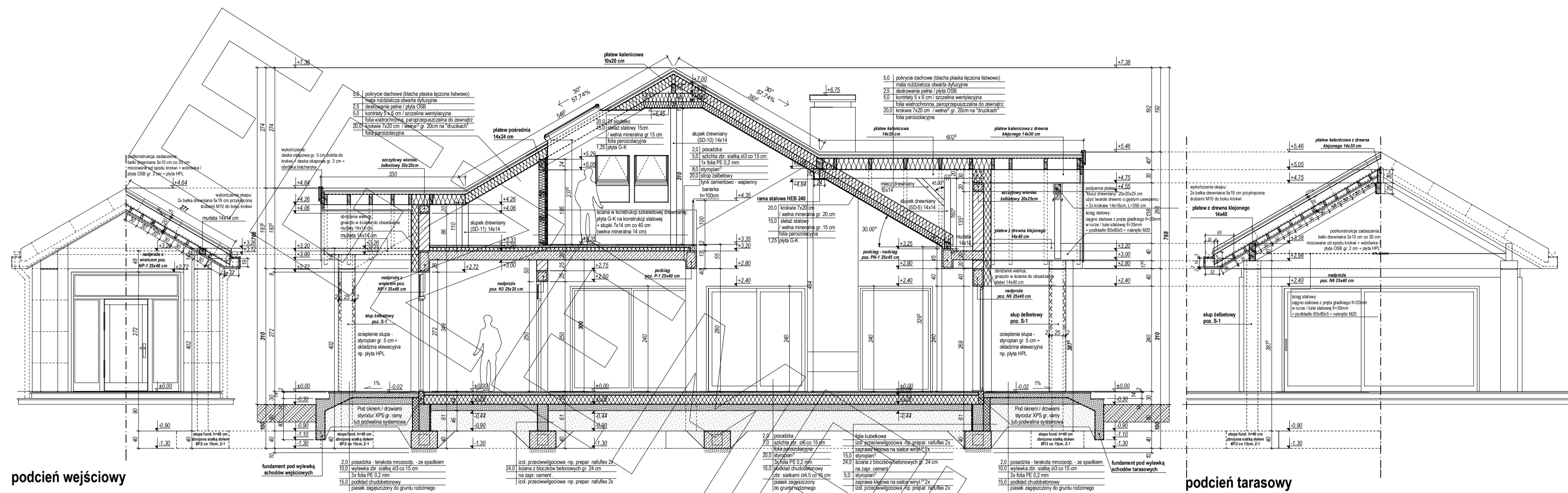


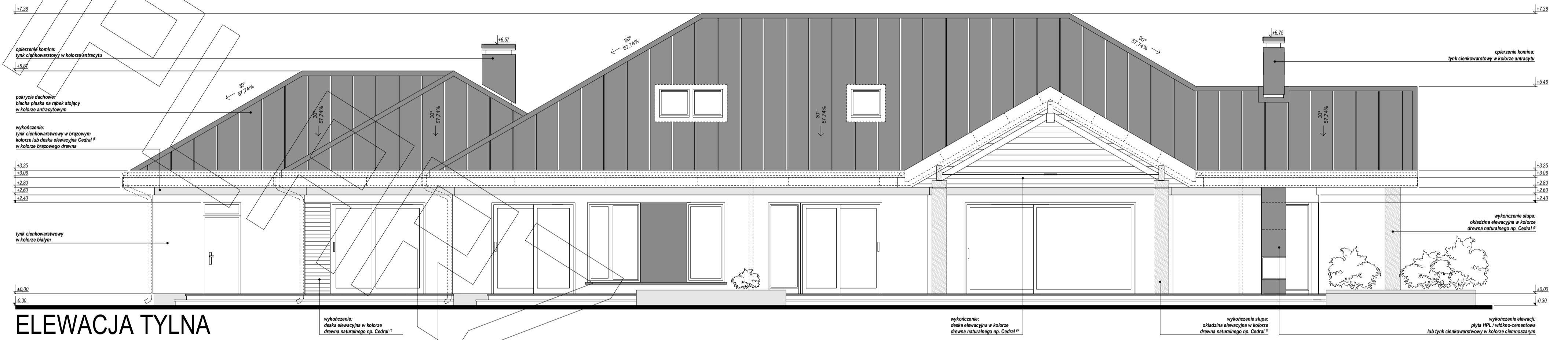
Podkreślenia dla wykonania:
 słupki drewniane 5x8cm mocowane do płyt żelbetonowych za pomocą łączników kątowych (rub M10)
 + szalona płyta OSB gr. 2cm + pianka PUR gr. 10cm + blacha na rabek



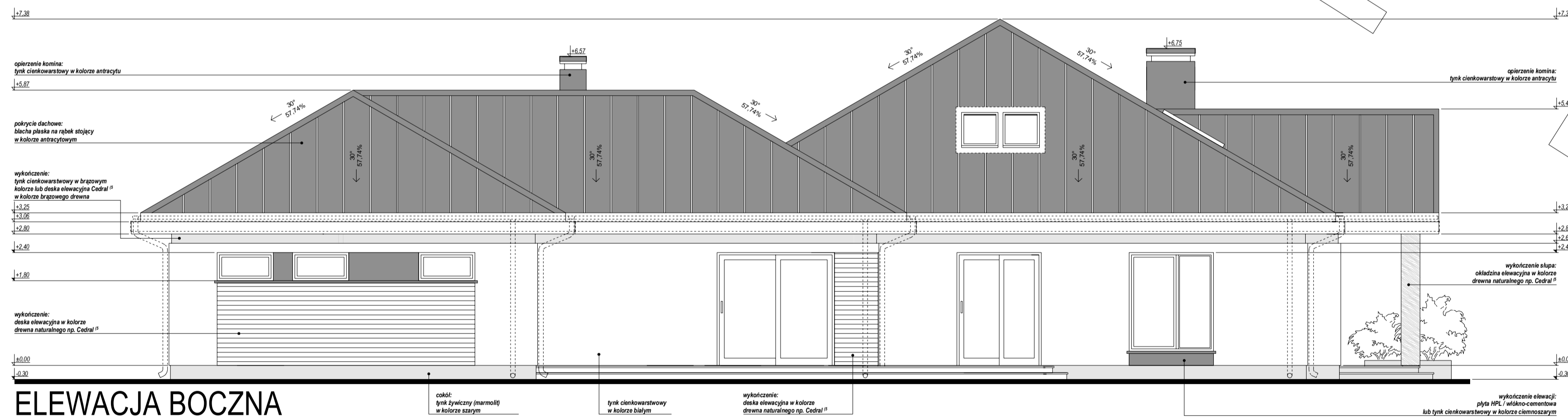




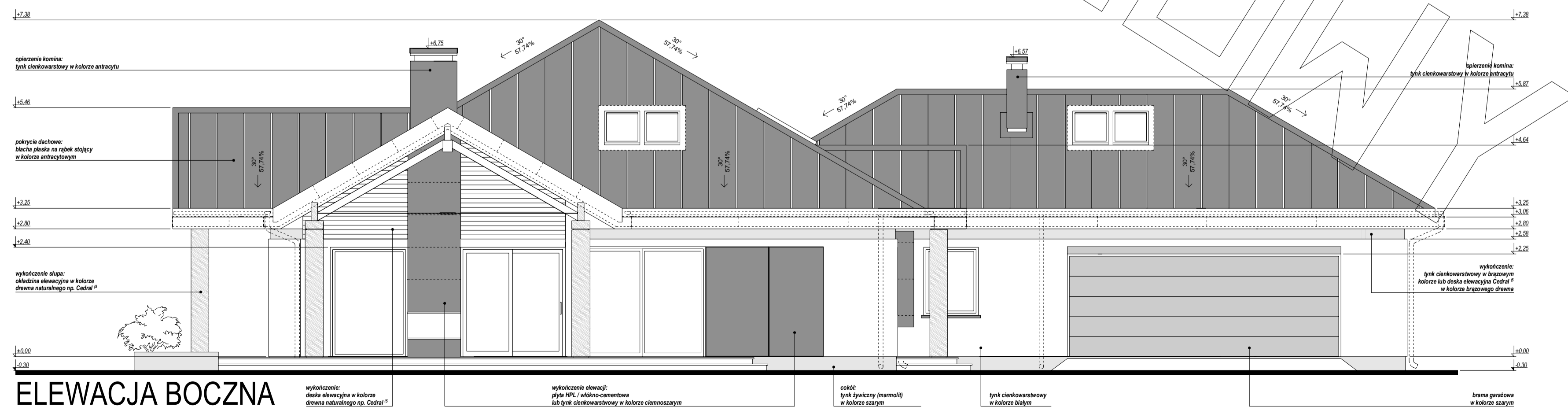
ELEWACJA FRONTOWA



ELEWACJA TYLNA



ELEWACJA BOCZNA



ELEWACJA BOCZNA